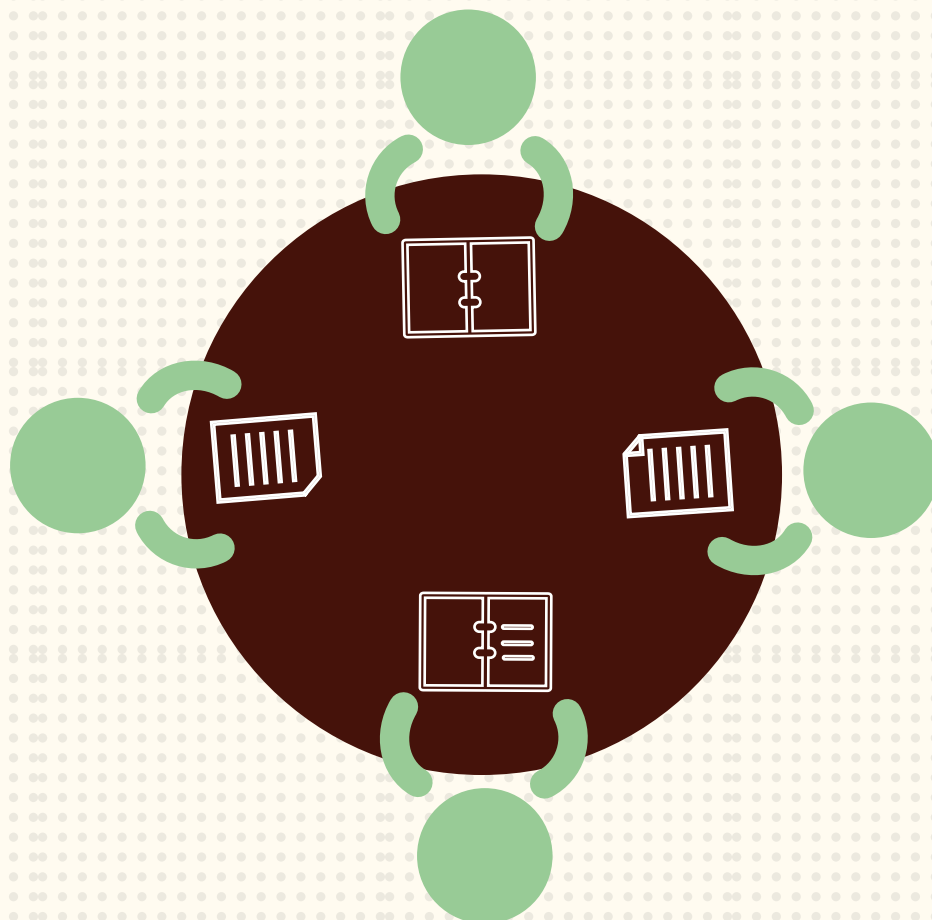


# A Summary of Findings for the Los Angeles County 241.1 Multidisciplinary Team

Annual Report to the Los Angeles County  
Board of Supervisors—May 2015

Denise C. Herz, Ph.D.  
School of Criminal Justice & Criminalistics  
California State University—Los Angeles



## Overview of Data & Methods

Data Collection  
Launches

Oct. 2013

*Initial  
Data*

All 241.1 Referrals  
“Initial Data” =  
Characteristics at Time of  
Arrest & 241.1 Referral

Initial Data Entered By:

- 241.1 DCFS Unit
- 241.1 Probation Unit
- DCFS Education Section & Consultants
- DMH

*Tracking  
Data*

Up to 30 241.1 youth who  
received a disposition each  
month starting in October  
“Tracking Data”

Tracking Data Entered By:

- 241.1 DCFS Unit
- 241.1 Probation Unit
- DMH (Service data only)

241.1  
CWS/CMS  
Web-Based  
Application

### TARGET POPULATION

Only youth with a  
declared 300 case by the  
time they received their  
delinquency disposition

### TRACKING PERIOD

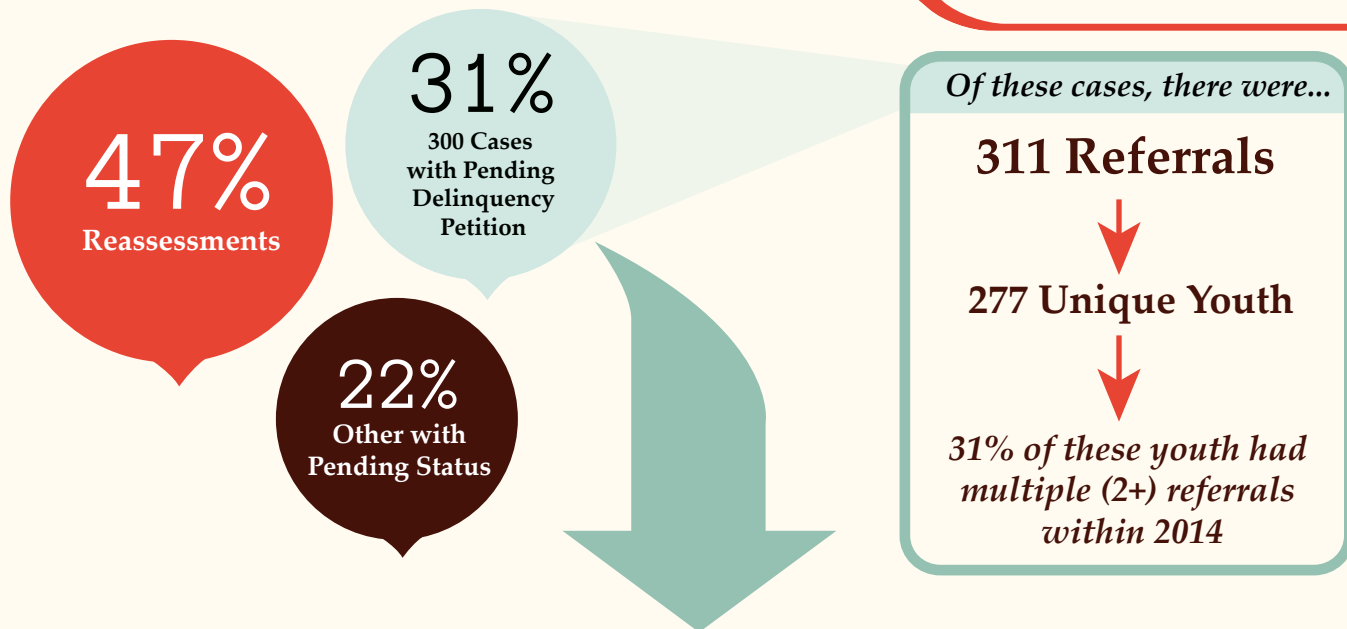
Youth’s status at 6 months  
or 1 year after disposition  
or until jurisdiction  
terminates in both systems-  
whichever comes first

### THIS REPORT INCLUDES:

- 1 Referral type for all referrals
- 2 Disposition & characteristics for all 241.1 referrals with a declared 300 case and pending delinquency petition
- 3 Six month tracking data results for 62 youth who received a disposition in October, November, and December 2013

## 2014 Referrals & Dispositions

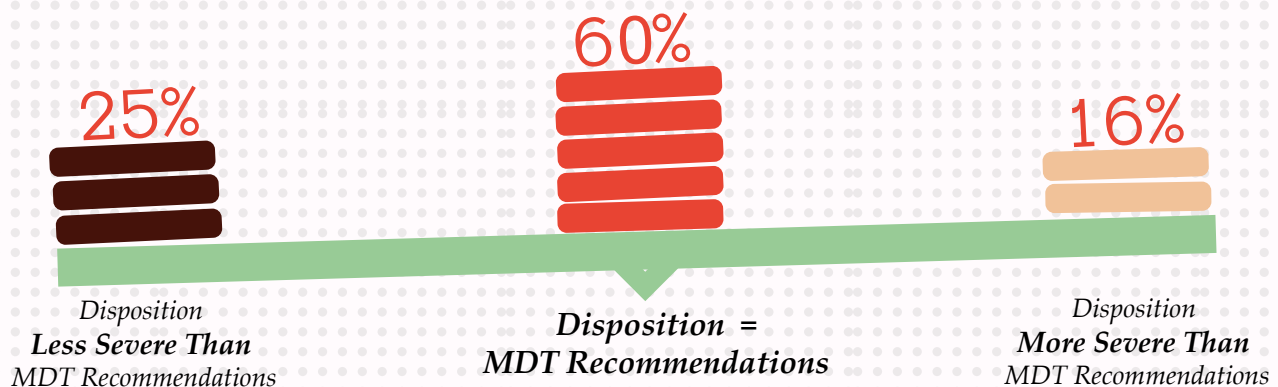
Type of 241.1 Referrals Received (N=1,021 referrals)



### MDT Recommendations & Court Dispositions

<b>Dismiss</b>	<b>Informal Probation</b> WIC 654.2, 725a, 790	<b>Dual Jurisdiction</b> WIC 300/602	<b>Ward of Delinquency Court</b> WIC 602; 300 Case Closed	<b>Transferred To Another Court/County</b>
<b>MDT Recommendations</b>				
<b>1%</b>	<b>56%</b> ○○○○○○○○	<b>31%</b> ○○○○	<b>2%</b>	---
<b>Disposition Outcomes</b>				
<b>4%</b>	<b>42%</b> ○○○○○	<b>33%</b> ○○○○	<b>3%</b>	<b>7%</b> ○

\*\*\* 10% of cases pending recommendations and motions



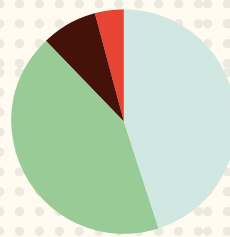
## Who were the 241.1 referrals?

Limited to  
Unique Individuals  
with a Declared 300  
Case & a Pending  
Delinquency Petition  
(N=402)

37%  
FEMALE



63%  
MALE



45% African-American

43% Latino

8% Caucasian

4% Other

Average Age

**16**  
Years Old

### • AT TIME OF THEIR ARREST

Family had been  
referred to DCFS

**10**  
times  
(on average).

Youth had spent  
**5**  
years in DCFS care  
(on average)  
consecutive and  
non-consecutive.

**32%**  
were living in  
group homes

17% at Home  
17% with Relative

Dependency Representation

*Children's Law Center*

33% Unit 1

23% Unit 2

21% Unit 3

### • • AT TIME OF ASSESSMENT

**40%**

Did not have an  
identifiable  
**Education Rights  
Holder**



**70%** were  
Enrolled in  
School

21% Attended Regularly  
18% Doing Well/Average  
49% Credit Deficient



**31%** were receiving  
Special Education  
Services



**16%** needed  
an Assessment  
for Special  
Education



**School Status &  
Academic Performance**



**Behavioral  
Health Status**

### • • • AT TIME OF ASSESSMENT



**74%** had  
Mental Health  
Diagnosis



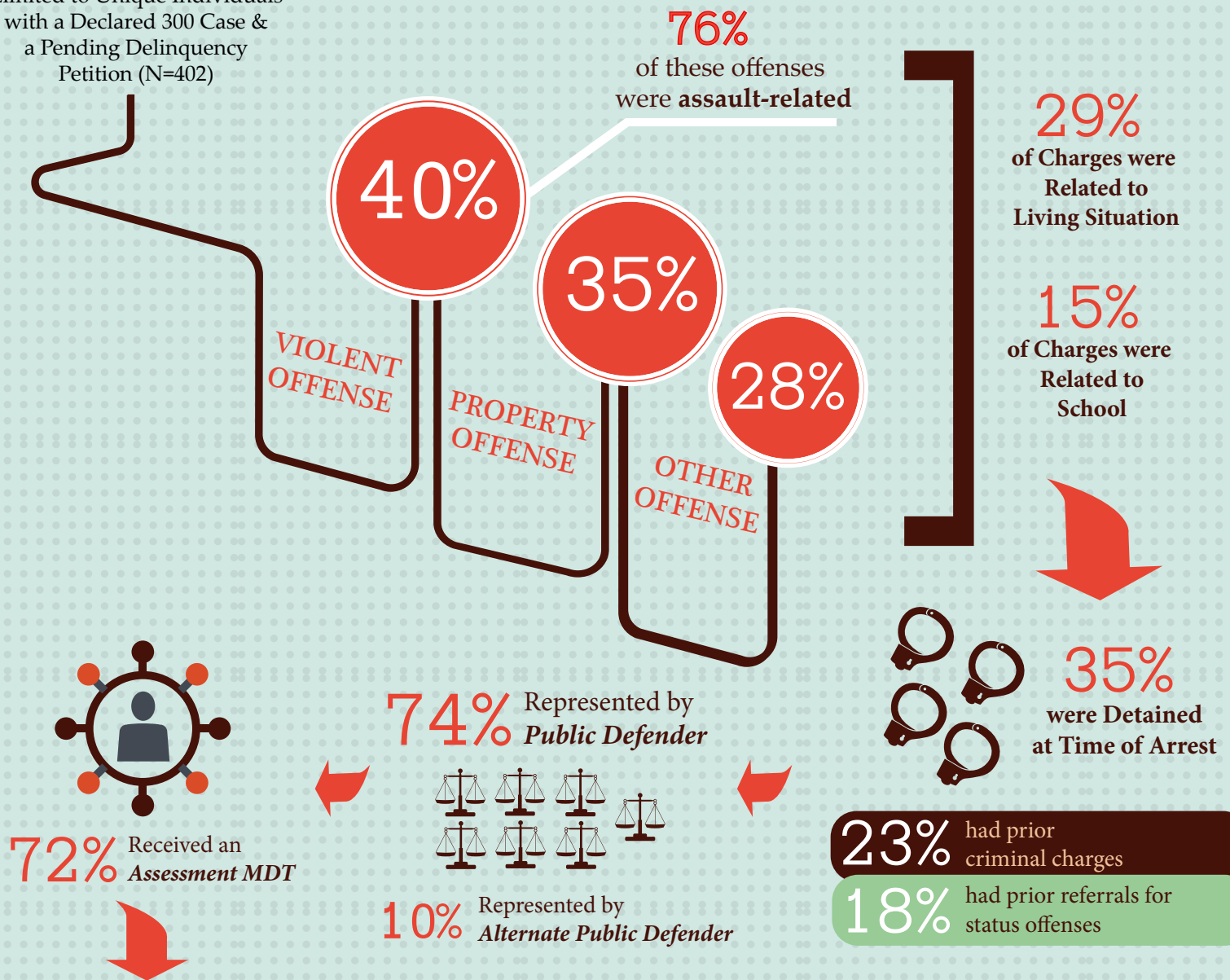
**59%** had  
Pattern of Drug Use or  
Abuse/Dependency Diagnosis

**23%**  
Experienced  
Suicidal Ideation

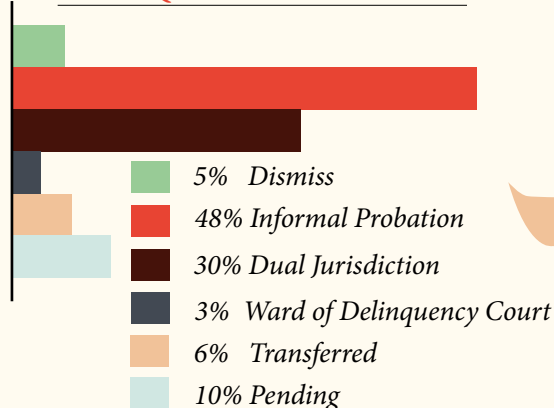
**27%**  
Were  
Prescribed  
Medication

## What were their offenses & how did they move through the juvenile justice system?

Limited to Unique Individuals  
with a Declared 300 Case &  
a Pending Delinquency  
Petition (N=402)



### DELINQUENCY DISPOSITION



**37%**  
Received  
Post MDT  
Meeting

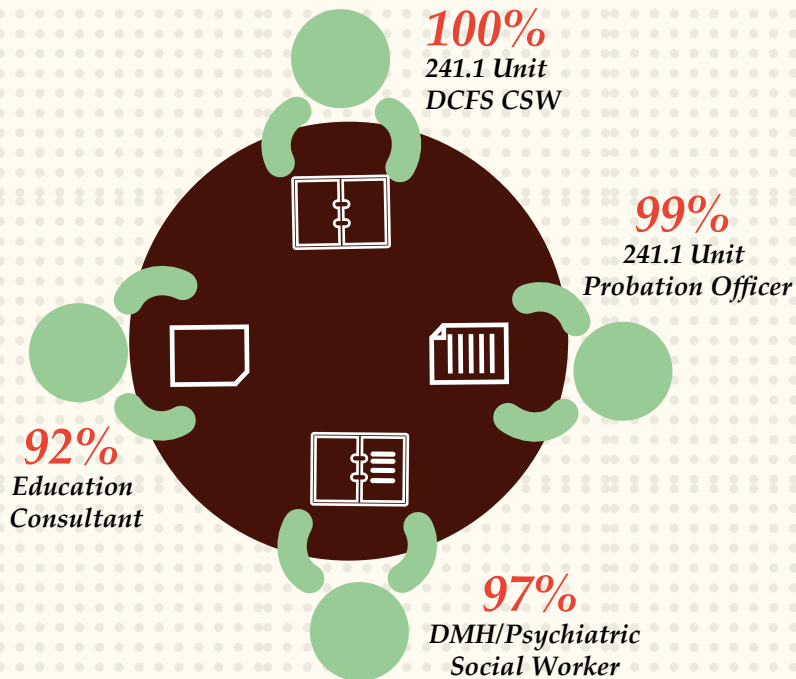
### TOP 4 PROBATION CONDITIONS



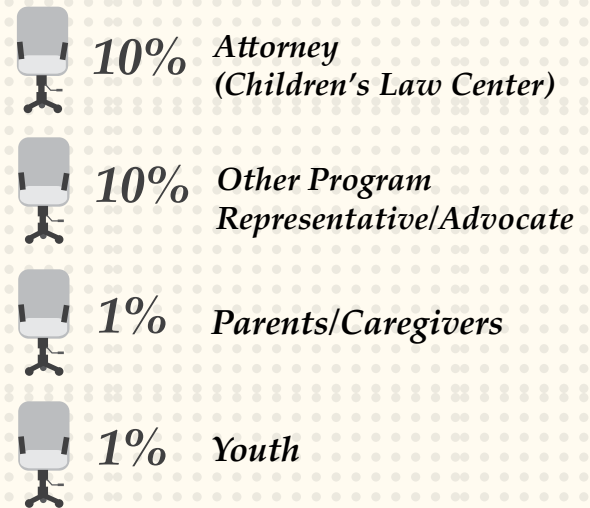
## Who attended MDT meetings?

**72% Received 241.1 Assessment Meeting (Pre-Adjudication)**

### MOST LIKELY ATTENDED BY:

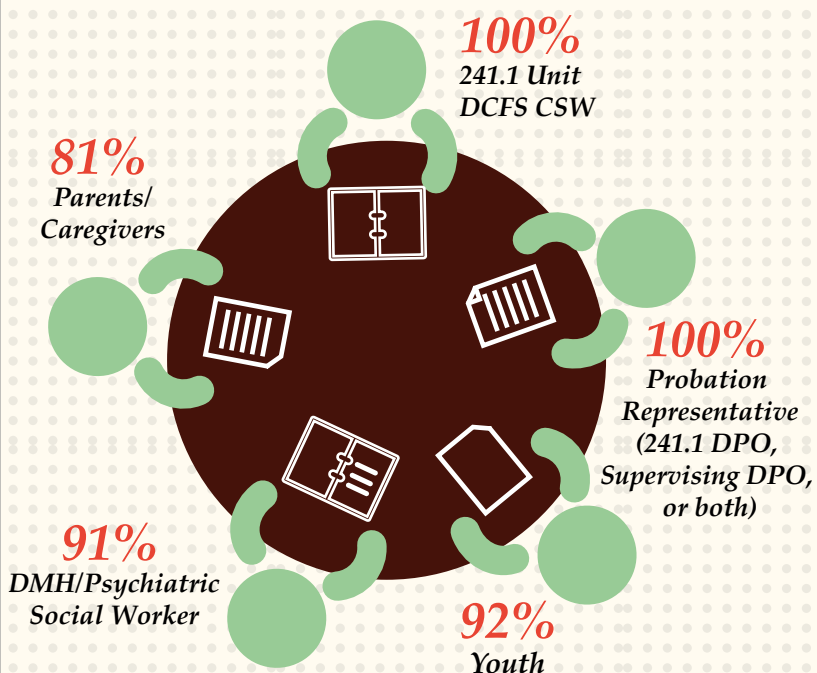


### LESS LIKELY ATTENDED BY:

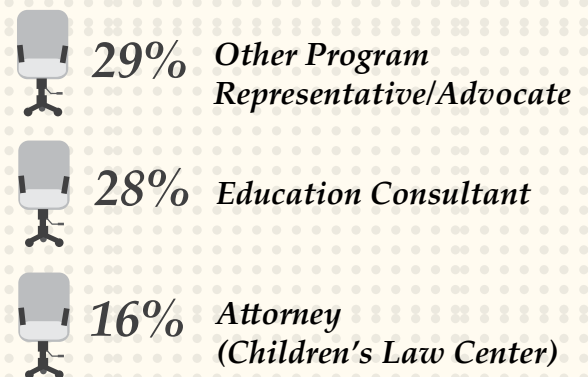


**37% Received a Post MDT Meeting (Post-Disposition)**

### MOST LIKELY ATTENDED BY:



### LESS LIKELY ATTENDED BY:



## Tracked Youth at 6 Months After Disposition: Services and Outcomes (N=62)

% Connected to Mental Health Services <b>89%</b>	% Connected to Substance Abuse Services <b>55%</b>	% Connected to Behavioral/Social Services <b>84%</b>	% Connected to Educational Services <b>86%</b>
TOP 3 SERVICES WITHIN EACH CATEGORY	TOP 3 SERVICES WITHIN EACH CATEGORY	TOP 3 SERVICES WITHIN EACH CATEGORY	TOP 3 SERVICES WITHIN EACH CATEGORY
INDIVIDUAL TREATMENT 100% → 25% <i>Not Attending</i>	ALCOHOL/DRUG EDUCATION 53% → 78% <i>Participating/ Completed</i>	ANGER MANAGEMENT 63% → 60% <i>Participating</i>	TUTORING 66% → 31% <i>Not Attending</i>
GROUP TREATMENT 53% → 31% <i>Not Attending</i>	OUTPATIENT TREATMENT 27% → 56% <i>Not Attending</i>	INDEPENDENT LIVING PROGRAM 25% → 54% <i>Referral Only</i>	ATTENDANCE MONITORING 60% → 56% <i>Participating</i>
FAMILY TREATMENT 33% → 28% <i>Not Attending</i> 17% <i>Referral Only</i>	INPATIENT TREATMENT 18% → 40% <i>Not Attending</i>	LIFE SKILLS TRAINING 21% → 64% <i>Participating</i>	CREDIT RECOVERY 42% → 27% <i>Referral Only</i>  <b>Note:</b> 45% eligible for AB 167 or 317E

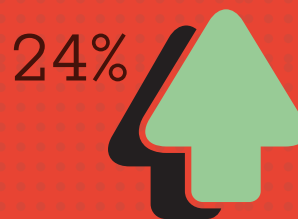
## OUTCOMES AT 6 MONTHS



Graduated



Regular Attendance  
Increased



"Doing Average"  
Academically  
Increased



Received  
Court Violations



Referred for  
Reassessment



Received  
WIC 777 Violations



Had New Arrests