



**CAL STATE LA**  
CALIFORNIA STATE UNIVERSITY, LOS ANGELES

harder + co | community  
research

**USC** University of  
Southern California

**UCLA**

# THE 2<sup>ND</sup> ANNUAL GRYD RESEARCH AND EVALUATION SYMPOSIUM

MARCH 30, 2017





## BY THE END OF THE DAY, WE WILL:

- Identify where GRYD efforts are working
- Identify areas to improve services moving forward
- Discuss future phases of GRYD Research and Evaluation



# PUTTING GRYD EVALUATION AND RESEARCH IN CONTEXT



# AN BRIEF OVERVIEW OF GANG RESPONSES IN THE CITY OF LOS ANGELES

**1993:** OJJDP launches Juvenile Gang Suppression and Intervention Research and Development Program under Irving Spergel. This work evolves into OJJDP's Comprehensive Gang Model, launched in 2003.

**1980s:** Law Enforcement and Corrections Focused Suppression

**1940s-1970s:** Community Organization and Street Work

**1997-2008:** LA Bridges I & II

**2003:** OJJDP Gang Reduction Program (Boyle Heights)

**2007:** The Advancement Project Releases "A Call to Action" Report

**2008:** Office of Gang Reduction and Youth Development Office is established

**2009:** GRYD Zone Assessments are completed—GRYD Services Begin

**2010/11:** Urban Institute begins evaluating GRYD

# THE EVOLUTION OF GRYD SERVICES AND EVALUATION

2009: GRYD Zones established and services begin

2015/16: SNL is held in 32 parks & GRYD Zones increase to 23; GRYD partners with Probation on the Juvenile Probation Reentry Project; trauma survey administered and trauma training course is piloted

March 30, 2017: Updated and expanded evaluation results for IR and Gang Crime; Prevention; FCM; and Trauma Pilot

2011/12: GRYD Service Models and GRYD Database are launched

2015-2017: GRYD evaluation moves from Urban Institute to a collaborative based at Cal State Los Angeles: The GRYD Research and Evaluation Team

# 2016/17: GRYD RESEARCH AND EVALUATION TEAM

Denise Herz, Ph.D., in the School of Criminal Justice and Criminalistics oversees and directs the GRYD Research and Evaluation Team, which includes:

- California State University, Los Angeles: Molly Kraus, MPL; Kristine Chan, MSW; Carly Dierkhising, Ph.D.; and Akhila Ananth, Ph.D.
- Harder + Company Community Research: Loraine Park, MSW and Alfonso Martin, MA
- University of California, Los Angeles: Jorja Leap, Ph.D.; Crystal Thomas, Ph.D.; Laura Rivas, MSW/MPP; Kim Manos; P. Jeffrey Brantingham, Ph.D.; and Nick Sundback
- University of Southern California: Karen Hennigan, Ph.D.; Kathy Kolnick, Ph.D.; and Flor Vindel, MSW
- University of Utah: Patricia Kerig, Ph.D.

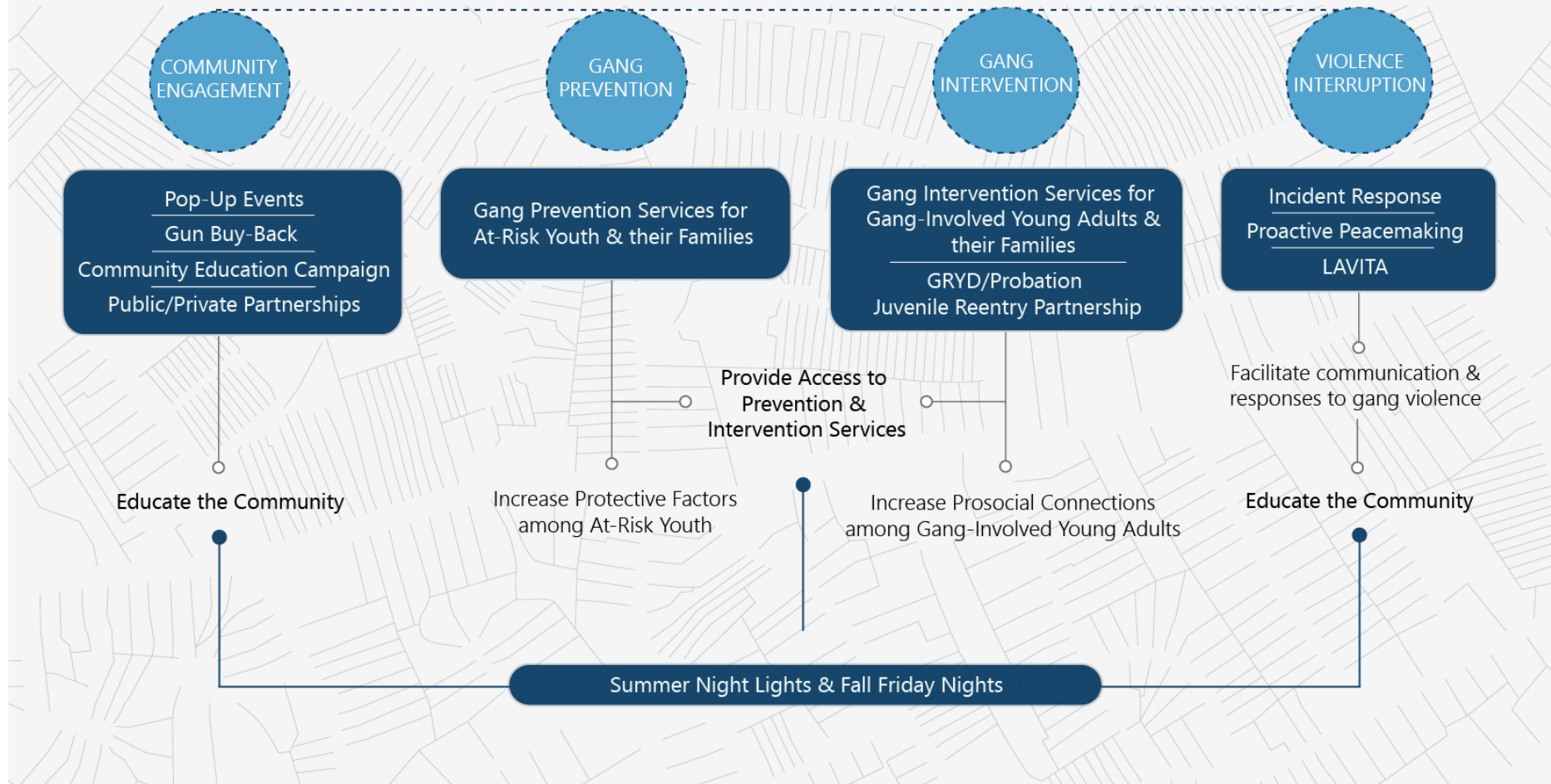
Key goals of the Team:

- Objectively and rigorously assess the impact of GRYD services, and
- Create a “research to practice” feedback loop for continuous improvement of GRYD services.



# OVERVIEW OF THE GRYD COMPREHENSIVE STRATEGY

**MISSION:** GRYD's mission is to strengthen youth/young adults, family, and community resilience to the influence of gangs by fostering public/private collaborations and supporting community-based prevention and intervention services.





# THE MISSION AND GOALS OF THE COMPREHENSIVE STRATEGY

- GRYD Comprehensive Strategy Mission
  - *GRYD's mission is to strengthen the resiliency of youth/young adults, families, and communities to the influence of gangs by fostering public/private collaborations and supporting community-based prevention and intervention services.*
- GRYD Comprehensive Strategy Goals
  - *To increase the community's knowledge and capacity to effectively address gang involvement and violence.*
  - *To increase protective factors and reduce gang joining among at-risk youth aged 10-15.*
  - *To increase prosocial connections and other protective factors for gang-involved young adults between the ages of 14 and 25.*
  - *To facilitate effective communication and coordinated responses to address gang violence.*

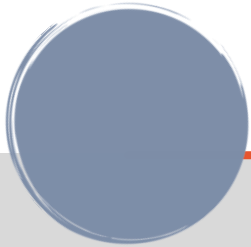
# TODAY'S AGENDA

- BEFORE LUNCH
- Evaluation Results related to GRYD Intervention Incident Response and Gang Crime
- Evaluation Results related to GRYD Prevention Model
- Evaluation Results related to GRYD Intervention Family Case Management Services (Gang Intervention Services)
  
- AFTER LUNCH
- Findings for Trauma Survey and Training Course
- Findings for Summer Night Lights 2016 Evaluation

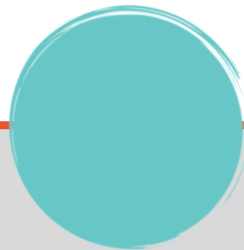
*NOTE: Due to limited time, the evaluation results for the GRYD/Probation Reentry Program will not be presented today; however, the evaluation report for this program is available on-line with the other reports.*

# DATA AND METHODS USED FOR GRYD EVALUATION

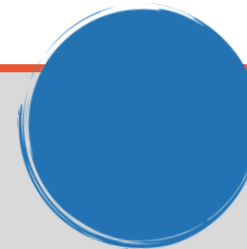
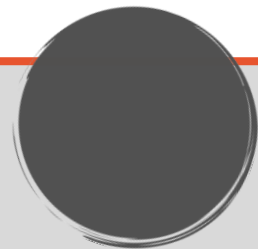
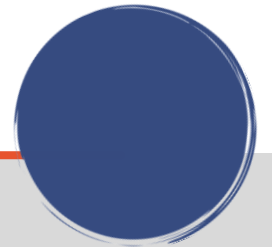
GRYD Efforts to Outcomes (ETO) Database



FCM Assessment Tool: Social Embeddedness Tool (SET)



Ethnographic Observation of Incident Response



Prevention Eligibility Screening Tool: Youth Services Eligibility Tool (YSET)

Interviews and Focus Groups with Agency Staff, Clients, and Client Families

Los Angeles Police Department Crime (LAPD) Crime Data

**Quantitative Data**

**Qualitative Data**

# IMPORTANT NOTES ABOUT THE DATA AND METHODS

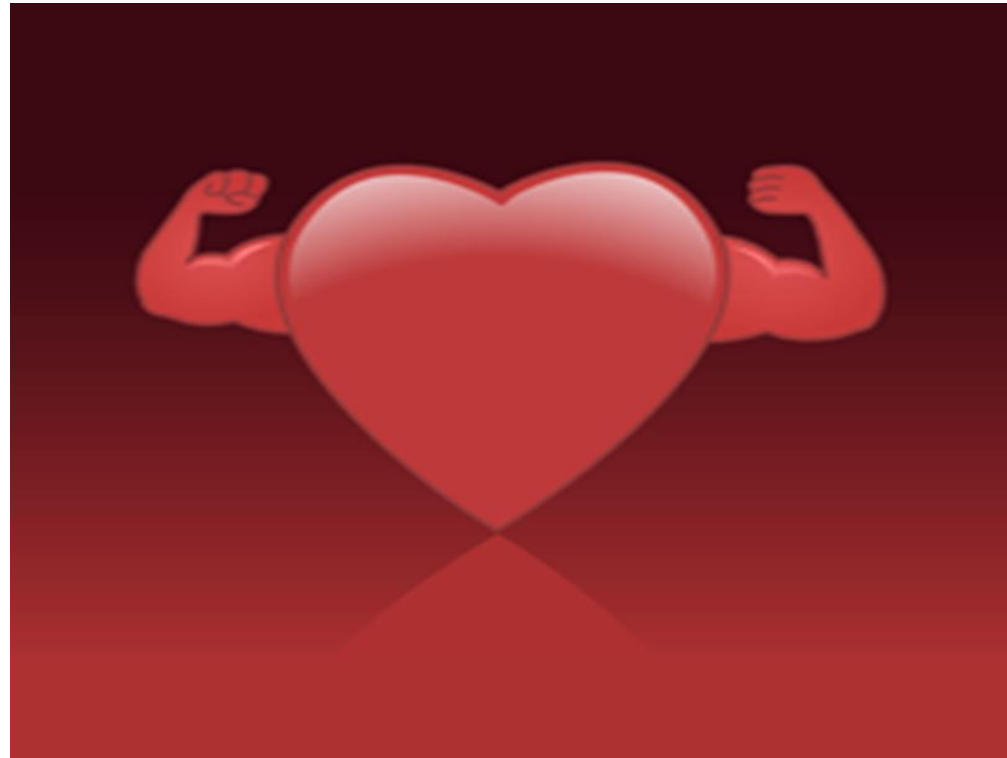
- Logic models for all GRYD Comprehensive Strategy components discussed today are located in the booklet you received at check-in.
- The data timeframes used to evaluate different components vary depending on (1) the launch of revised program models/services; (2) the availability of databases to capture services and activities; and (3) a determination of what timeframe would be most accurate to reflect impact (e.g., limiting the number of years analyzed for crime data).
- Primary Prevention clients and Intervention Transitional Client Services clients are excluded from analysis and the reports—future analyses may include them.
- Today's presentations highlight findings from the full reports. The full reports contain much more data and break the data down by GRYD Zone more often than will be done in today's presentations.
- Full reports and PowerPoint slides will be available on-line at <http://www.jj-research.com/projects/gryd> starting tomorrow, March 31.



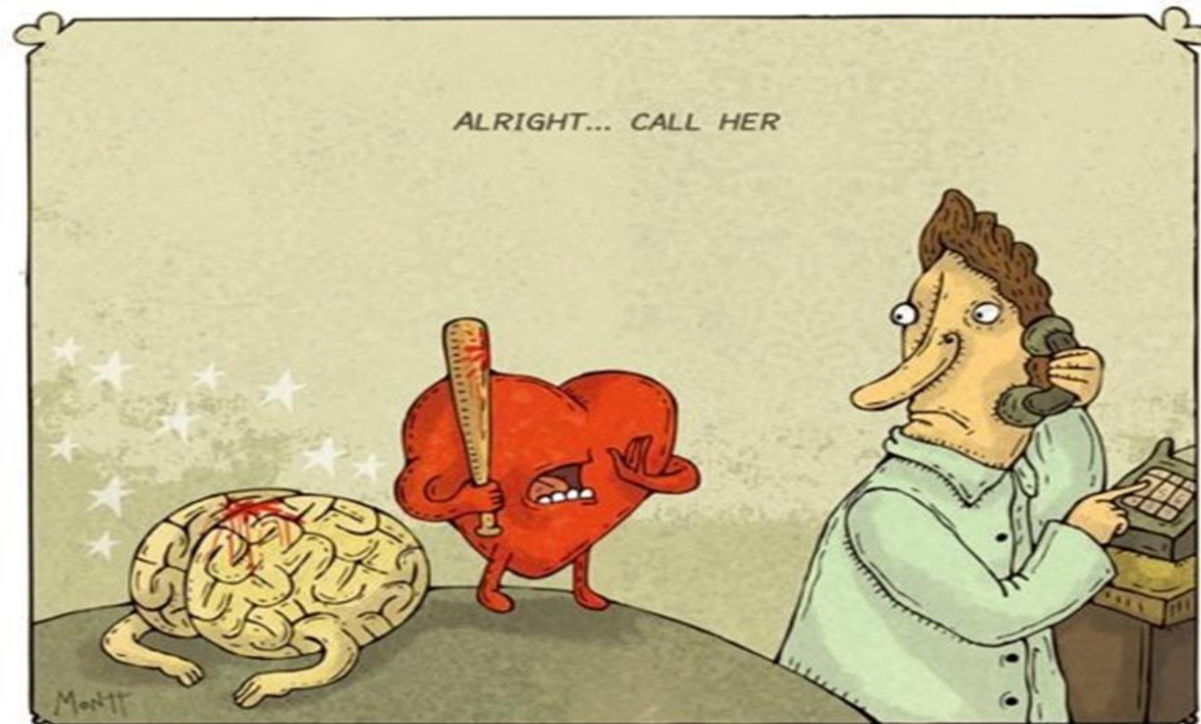
# WHY IS RESEARCH AND EVALUATION IMPORTANT TO PRACTICE?



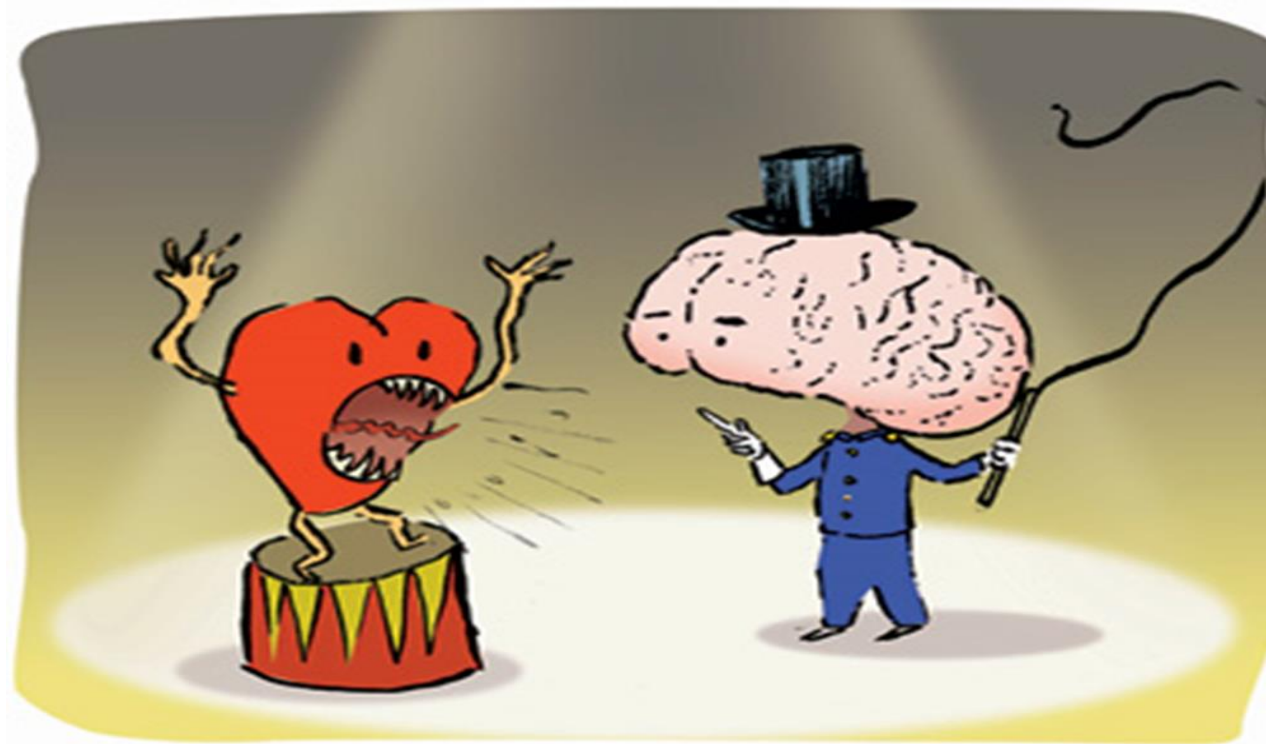
# PRACTICE WITHOUT DATA



# PRACTICE UNINFORMED BY DATA



# DATA UNINFORMED BY PRACTICE





# DATA AND PRACTICE WORKING TOGETHER

